



May 13, 2016

Attn: Board of Supervisors  
Fallowfield Township  
9 Memorial Drive  
Charleroi, PA 15022

RE: SR 70(10J) I-70 @ PA 481 Interchange  
Fallowfield Township  
Washington County  
ECMS No. 47022

Dear Supervisors:

This letter is to inform you of an upcoming phase change on the above referenced project.

On Wednesday, May 18, 2016 during the night time hours the existing Westbound I-70 to Route 481 ramp will be closed and the newly constructed ramp opened. In addition, the alternating traffic on Route 481 will shift from the Northbound Lanes to the Southbound Lanes. During this phase of Route 481 reconstruction all traffic wishing to travel I-70 West will be required to follow the detour and travel East on I-70 to the Route 43 Interchange to loop around to I-70 Westbound. This phase of work will take approximately two to three weeks, weather depending. An enclosed copy of the detour plan has been provided for your reference.

Please contact our office if you have any questions or require additional information.

Sincerely,

Clayton J. Stahl, P.E., President  
Gulisek Construction, LLC

Enclosure  
CJS/pb

cc: Roxanne Rossi, Inspector In Charge  
Terrance Kostelnik, Project Superintendent  
Brandon Farrell, Project Engineer

5/13/2016 9:21:35 AM  
 R:\5249 SR 0070 10J #042 Pre1 Engr\600 Support Dwg\ing Construction\606 Change Order #SR 481 Culiver Detour\0070-10J-02TR002.PLN.dgn

DISTRICT	COUNTY	ROUTE	SECTION	SHEET
12-0	WASHINGTON	0070	10J	1 OF 2
12-0	WASHINGTON	0481	G10	
FALLOWFIELD TOWNSHIP				
REVISION NUMBER	REVISIONS	DATE	BY	



**CMS - CHANGEABLE MESSAGE SIGN WITH TELECOMMUNICATION**  
 CMS1, CMS2, CMS3  
 LOCATION: GRANGE ROAD AND SR 481 (SCENIC DRIVE) - AS SHOWN ON THIS SHEET

- |                 |
|-----------------|
| RAMP TO 1-70 WB |
|-----------------|

SCREEN 1
- |                   |
|-------------------|
| CLOSED AT EXIT 35 |
|-------------------|

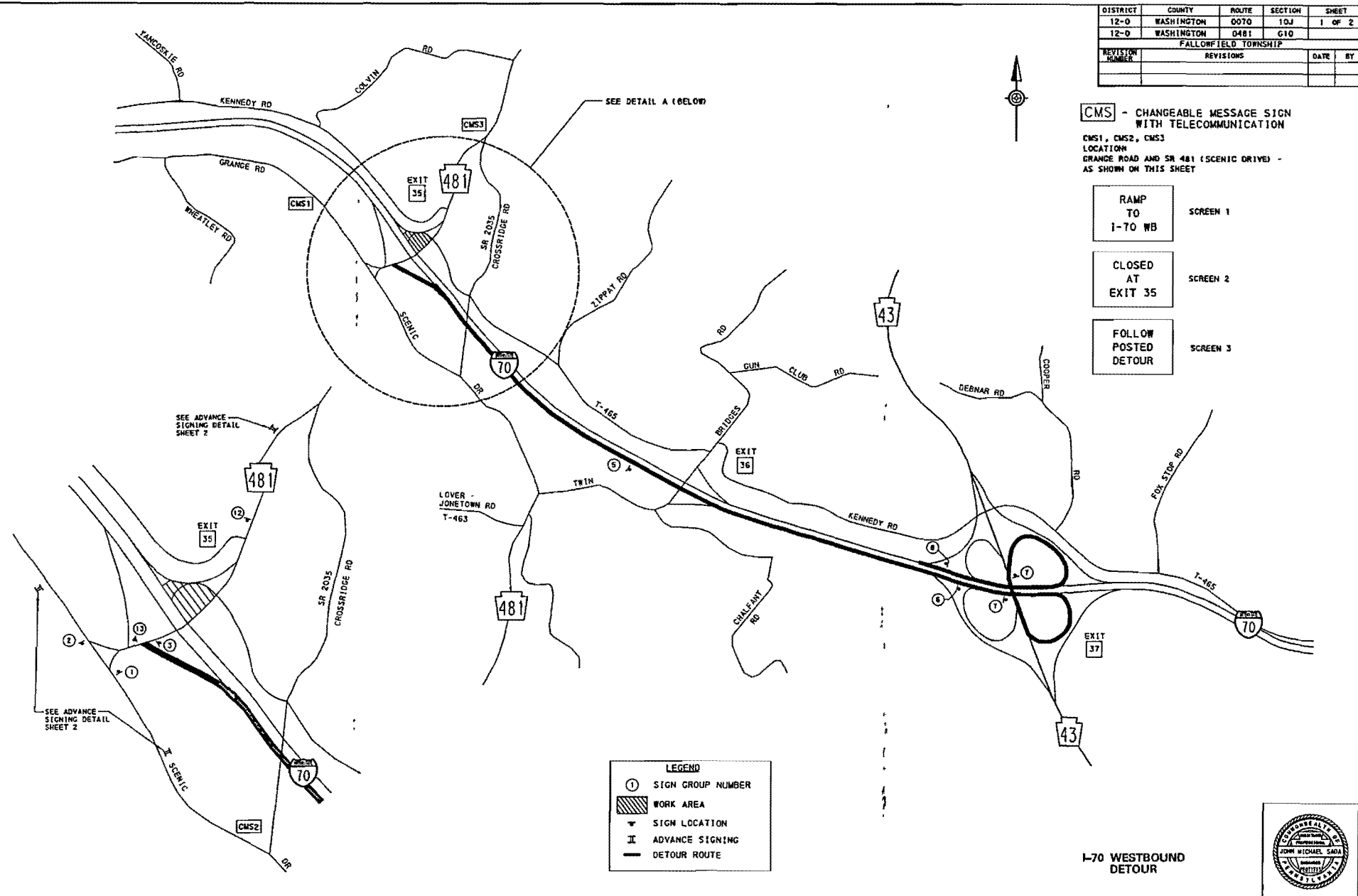
SCREEN 2
- |                      |
|----------------------|
| FOLLOW POSTED DETOUR |
|----------------------|

SCREEN 3

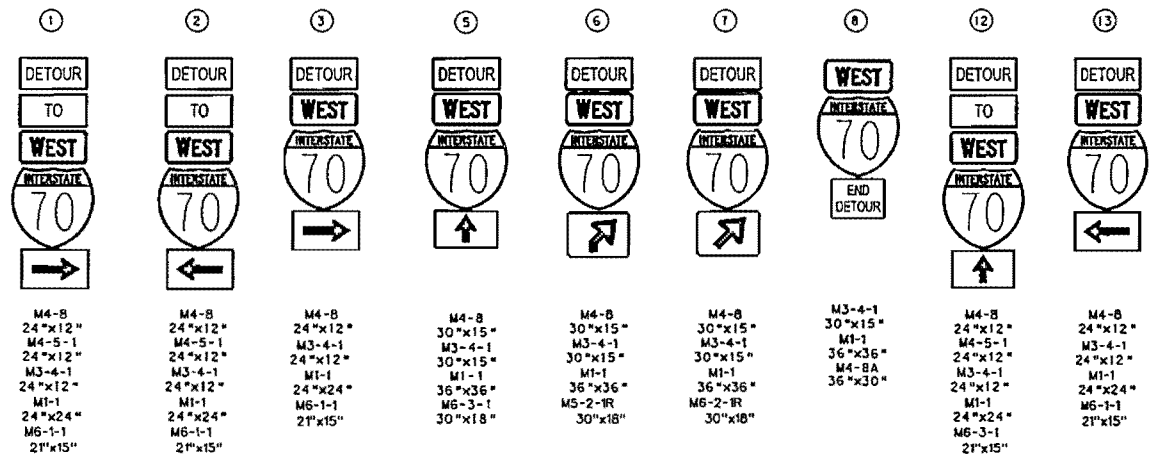
**LEGEND**

- 1 SIGN GROUP NUMBER
- WORK AREA
- SIGN LOCATION
- ADVANCE SIGNING
- DETOUR ROUTE

**I-70 WESTBOUND DETOUR**



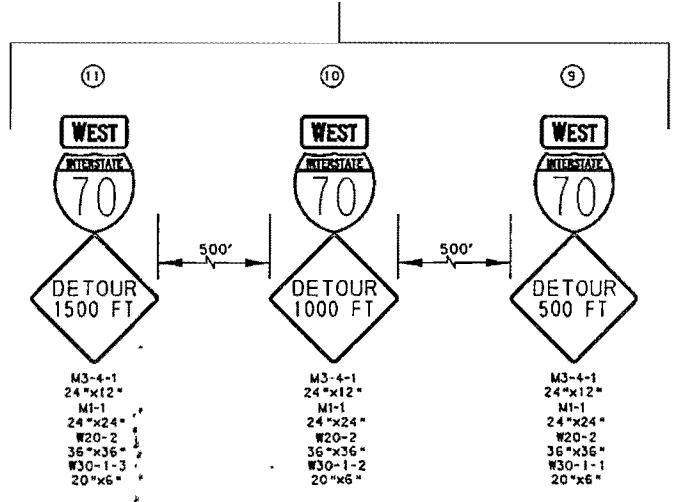
DISTRICT	COUNTY	ROUTE	SECTION	SHEET
T2-0	WASHINGTON	0070	10J	2 OF 2
T2-0	WASHINGTON	0481	G10	
FALLOWFIELD TOWNSHIP				
REVISION NUMBER	REVISIONS	DATE	BY	



**TABULATION OF TRAFFIC CONTROL DEVICES**  
 (INCIDENTAL TO ITEM 0901-0001)  
 (FOR INFORMATIONAL PURPOSES ONLY)

S I G N NO.	INSTALLATION MESSAGE	SIGN ASSEMBLY INSTALLATION	Q U A N T I T Y	ITEMIZED SIGN DESCRIPTION	SIZE	Q U A N T I T Y
1	DETOUR, TO, WEST, I-TO, INT. 90° TURN	M4-B, M4-5-1, M3-4-1, M1-1, M6-1-1	1	M4-B	24" X 12"	5
2	DETOUR, TO, WEST, I-TO, INT. 90° TURN	M4-B, M4-5-1, M3-4-1, M1-1, M6-1-1	1	M4-5-1	24" X 12"	3
3	DETOUR, WEST, I-TO, INT. 90° TURN	M4-B, M3-4-1, M1-1, M6-1-1	1	M3-4-1	24" X 12"	14
9	DETOUR, WEST, I-TO, STRAIGHT THROUGH	M4-B, M3-4-1, M1-1, M6-3-1	1	M1-1	24" X 24"	14
6	DETOUR, WEST, I-TO, ADVANCE 45° RIGHT	M4-B, M3-4-1, M1-1, M5-2-1R	1	M6-1-1	21" X 15"	4
7	DETOUR, WEST, I-TO, 45° RIGHT	M4-B, M3-4-1, M1-1, M6-2-1R	2	M6-3-1	30" X 18"	1
8	WEST, I-70, END DETOUR	M3-4-1, M1-1, M4-8A	1	M5-2-1R	30" X 18"	1
9	WEST, I-70, DETOUR, 500 FT	M3-4-1, M1-1, W20-2, W30-1-1	2	M6-2-1R	30" X 18"	1
10	WEST, I-70, DETOUR, 1000 FT	M3-4-1, M1-1, W20-2, W30-1-2	2	M4-8A	36" X 30"	1
11	WEST, I-70, DETOUR, 1500 FT	M3-4-1, M1-1, W20-2, W30-1-3	2	W20-2	36" X 36"	9
12	DETOUR, TO, WEST, I-TO, STRAIGHT THROUGH	M4-B, M4-5-1, M3-4-1, M1-1, M6-3-1	1	W30-1-1	20" X 6"	3
13	DETOUR, WEST, I-TO, INT. 90° TURN	M4-B, M3-4-1, M1-1, M6-1-1	1	W30-1-2	20" X 6"	3
				W30-1-3	20" X 6"	3
				M4-B	30" X 15"	3
				M3-4-1	30" X 15"	5
				M1-1	36" X 36"	5
				M6-3-1	21" X 15"	1
				TOTAL		76

II - ADVANCE SIGNING DETAIL



I-70 WESTBOUND  
DETOUR

